



**demelza**

extraordinary care for extraordinary children



**What is  
practical support?**  
and how can it help your family?



**At Demelza we do our best to help make life as easy as possible and relieve some of the day-to-day pressure of caring for a child with a life-limiting or life-threatening condition.**

Our specially-trained practical support volunteers can help with a range of one-off or short-term activities so that you can focus on taking care of your child and making memories.

These can be specific projects, such as decorating a room, putting together furniture, walking your dog or organising some storage solutions for medications and documents.



Driving 45 minutes to hospital chemotherapy appointments was a real challenge. But Demelza stepped in to help. Their incredible practical support volunteers drove Zak and his daddy to every appointment and brought them home again. No longer did we have to worry about finding parking nearby, the money for petrol or making poor Zak walk to the entrance in the pouring rain. All he wanted to do was hold his daddy's hand in the back of the car and thanks to the Demelza volunteer drivers, he was able to.

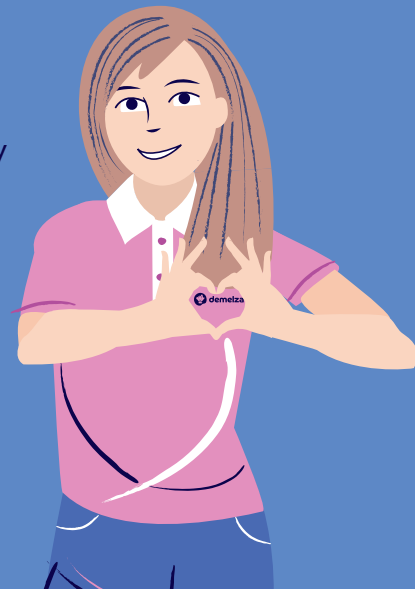
Caroline, mum to Zak

We aim to take care of a range of activities in a way that works for you:-

- Family transport
- Deliveries and collections
- Ironing (from home or remotely)
- Grocery shopping
- Gardening
- Dog walking
- Helping with food preparation
- Decorating and DIY
- Deep cleaning (domestic)



We can also drive you, your child and family to hospital appointments or to Demelza events to take the stress out of having to find transport. If you require a vehicle with wheelchair accessibility or extra space for your child's care equipment, we can help facilitate this.





**I enjoy being able  
to make a positive  
difference**

Get in touch to discuss  
how practical support  
volunteering can assist  
your family, email us at  
**practicalsupport@  
demelza.org.uk**



**@demelzacharity**

**Demelza Kent  
(Registered Office)**

Rook Lane, Bobbing,  
Sittingbourne, Kent,  
ME9 8DZ  
T: 01795 845200

**Demelza  
South East London**

5 Wensley Close,  
Eltham, London,  
SE9 5AB  
T: 020 8859 9800

**Demelza  
East Sussex**

150a Bexhill Road,  
St Leonards-on-Sea,  
East Sussex, TN38 8BL  
T: 01323 446461

**Find out more**



**01795 845299  
demelza.org.uk**

Registered Charity No. 1039651

**@demelzacharity**

